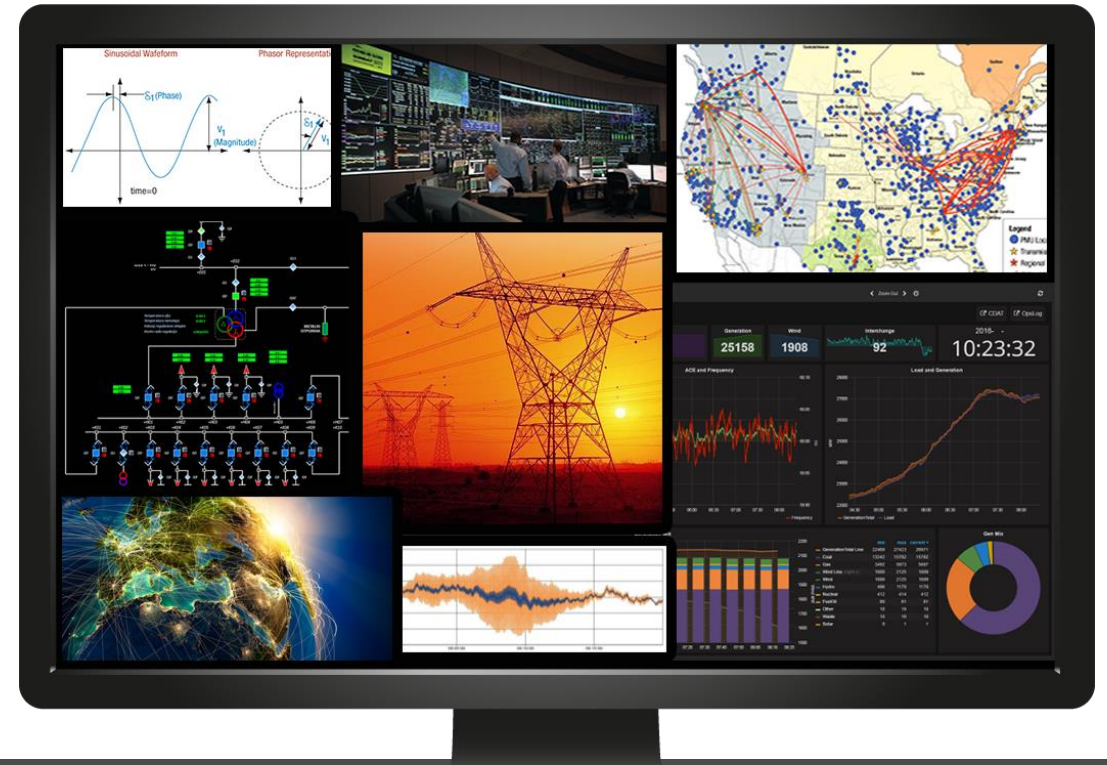




October 24



GPA Enterprise Edition Software – Licensing and Overview

Dr. Christoph Lackner

What is Enterprise Edition

- A new version of most common GPA Phasor Applications
 - Stream Splitter
 - OpenPDC
 - OpenHistorian
- Will also include features currently in
 - SIEGATE
 - Substation SBG
 - PMU Connection Tester*
 - ADAPT
 - OpenECA
- Will be available as open core – not open source
 - Changes to licensing model

Why new versions

- Current applications are 10+ years old
- Feedback from users
 - Difficult to include some newer features
 - Configuration is difficult
 - Applications are very flexible but difficult to leverage
- Changes in technology
 - Architecture is 10+ years
 - Changes in IT infrastructure capabilities
 - Changes in how synchrophasor data is used
 - Some components are near end of life

Why change Licensing Model

- GPA is committed to open Source Software
- All GPA Synchrophasor Software is MIT License
 - Anyone can get the applications
 - Anyone has access to the source code
 - Anyone can take and modify the application
- Cost of Maintaining and Improving
 - GPA is relying on a small set of utilities to fund development
 - Anyone benefits from these efforts
- Limitations when including features
 - Anything not published under MIT can not easily be included
 - Anything closed source can not be included



What is Open Core

- GPA is fully committed to open Source
- GPA can publish core functionality as Open Source
- GPA can use open source components in it's products
- GPA continuous to improve open source components
 - Slower pace
 - More selectively
- Applications are closed source
 - Can include closed source components

How does this Affect You

- Customers with Maintenance agreements will receive a license
 - No effect on operations
 - May need to agree to a license agreement during update
- Customers without current Maintenance agreement
 - GPA offers maintenance agreements and will include license in agreements
- Customers who end their Maintenance agreement
 - Licenses are perpetual. Without active maintenance agreement you can not get newer versions, but you are able to continue use of the currently installed version
- Universities, National Labs, R&D Organizations
 - GPA will provide educational or R&D licenses to your organization at no cost
- Developers
 - The core functionality continues to be open source
 - GPA maintains control of the non-core portions – we get to decided who to grant access

Instances vs Licenses

- Scope of current maintenance agreements will turn into Scope of Licenses
- A single License can cover an unlimited number of instances
- A single License only covers one (Electric) Operating Environment
 - E.g. openPDC at the substation => single Environment, openPDC at Control Center => second Environment
 - Second instance of openPDC for backup is covered
 - Any Test/Acceptance/PreProd environments are covered under a single license together with Production

What about Open Source Applications

- In addition to the open Core Libraries GPA will maintain an open source version of each application
- Updates to opens source versions are slower
- Open source versions may not contain all features
 - Simplified User Interfaces
 - Fewer Notification and Reporting Features
 - Will not work with all Modules (e.g. ICCP module or MANTRA)

Timeline for Licensing Changes

- EE release expected January 2025
- Open source release to follow 2025
- We will release one more “old version”
 - Includes any improvements made up to this point
 - Will not be maintained in past 2025
 - GPA may provide security patches though end of 2025
- Upgrade will be a standard update
 - No need for complex infrastructure changes
 - No need for complex license management

Simplifying Synchrophasors

- Synchrophasors Applications are complex
 - PDC, Historian, State estimator, SCADA Tie-ins, Data analytics, engineering applications
- GPA Products are complex
 - 20+ GPA Applications
 - Significant overlap
- We are committed to simplify
 - openPDC will continue to support many protocols
 - We will continue to work with other Vendors, Utilities etc to ensure interoperability
- Reduced number of GPA applications
 - EE consist of openPDC, openHistorian and Stream splitter
 - GPA will retire some applications throughout 2025
- We are committed to functionality
 - Features may move or get added to other applications
 - No functionality lost
 - We will continue to support applications with ongoing agreements
 - We may offer to switch maintenance agreements to other applications

Partnering with Vendors

- GPA believes choice in Vendor is important
 - Flexibility to choose from various analytics and platforms
 - Flexibility to have multiple vendors analytics
- GPA has partnered with Analytic Vendors
 - Artemes (Hardware and Power Quality)
 - PingThings (Data Analytics)
 - Synchrophasor Informatics (MANTRA)
- Simplifies Infrastructure if GPA products work well with others
- GPA continues to work with well with Vendors and Industry Organizations

 ARTEMES

PingThings

MANTRA
Modal ANalysis
and Oscillation
TRacking